

WAVE Siren™

WIRELESS AUDIBLE VISUAL ENUNCIATOR

WAVE employs state-of-the-art wireless technology to address the most demanding audible and visual event notification and hazard warning applications over areas of less than an acre to hundreds of acres.

Designed for critical safety applications, the WAVE Transmitter broadcasts digitally encrypted messages to activate WAVE Siren Stations within a three mile radius. The Transmitter accepts contact-closure signaling for automated triggering during programmable hours of operation. WAVE relies on low-frequency RF communication to operate in noisy environments and over challenging terrain.

WAVE Siren Station horns are modular in design to provide audible notification specific to the desired coverage area and application. Based on coverage area and sound pressure level requirements, Siren Stations can be ordered with up to four 100 W re-entrant horn, high-efficiency compression-drivers.



WAVE SIREN DELIVERS:

- Automatic or manual wireless siren actuation within a three mile radius
- Secure encoded communications
- Comprehensive, automatic self-test of RF communication and system status
- High intensity strobe light option for visual notification
- Siren Station NEMA 4X enclosure
- RF transmission test signal for Siren Station site selection
- Manual key operation or automated operation with contact-closure signal
- Programmable hours of operation to restrict automated external control
- Solar- or AC-powered Siren Station available
- High capacity, battery back-up for uninterrupted operation in a lightning environment
- Exclusive quick-connect technology for horns and solar panel

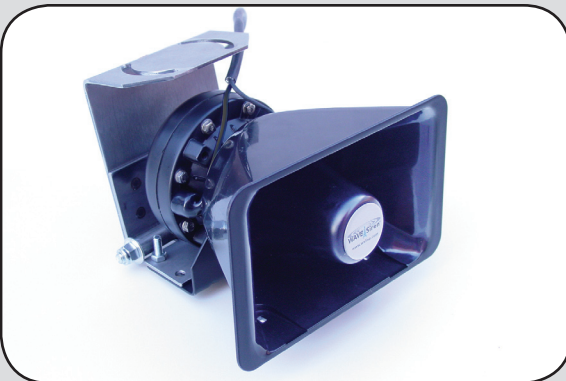
WAVE Siren and the Strike Guard Lightning Warning System combine to provide a fully automated lightning warning system. Strike Guard easily connects to the WAVE Transmitter to trigger the WAVE Siren Stations and WAVE Sequencers for audible lightning hazard notification and equipment protection at multiple locations.

TRANSMITTER SPECIFICATIONS:

INSTALLATION: Wall-mountable.
ENCLOSURE: Type 304 stainless steel for indoor environment.
BATTERY: User-replaceable lead-acid batteries. Low-battery indicator.
COMMUNICATION: 10 W, 27.255 MHz, DIP switch address programming.
SETTINGS: Hours of operation for external control input are programmable via soft keys and front panel LCD.
DISPLAY: System status, power and transmit indicator, manual selection knob, key-activated manual transmission.
CONTROL INPUT: Contact-closure signaling. CAT 5 interface cable.
EXTERNAL POWER: In-line switching power supply. Input 100-240 VAC, 50/60 Hz. UL, VDE, FCC, CSA, CE.
RANGE: Three mile radius, longer range with available high-gain antenna.
ANTENNA: Standard 3 ft monopole antenna, 50 ft coaxial cable.

SIREN STATION SPECIFICATIONS:

INSTALLATION: Typically affixed to a custom 12 ft (above ground) fiberglass pole available from Wxline. Also designed for tripod mount or pressure-treated wood pole mount (4x6 or 6x6).
EXTERNAL INDICATORS: Status, power and communication.
CONFIGURATION: Up to four compression drivers per Siren Station.
HORN MOUNTING: Stainless steel mounting plate with horn orientation adjustments.
HORN SPL OUTPUT: 130 dB at 3 m.
COMPRESSION DRIVER POWER RATING: 100 W continuous.
AMPLIFICATION: Internal 150 W, class AB amplifier.
ENCLOSURE: NEMA 4X, corrosion resistant.
COMMUNICATION: Superheterodyne. Complete RF supervision.
BATTERY: 7 AHr user-replaceable lead-acid battery, 12 AHr with solar unit.
ANTENNA: Eight-inch monopole antenna. High-gain antenna available for longer range.
EXTERNAL POWER: Input 100-240 VAC, 50/60 Hz. Solar-powered option available.
OPTION: High intensity strobe light.



The WAVE Transmitter sends secure coded RF messages to activate an unlimited number of Siren Stations and Sequencers within a three mile radius.

The WAVE Transmitter offers:

1. Easy programming through front panel switches and LCD
2. Comprehensive, automatic system status monitoring
3. Manual control or automated activation from external contact-closure
4. Manual selection of desired transmission via front panel quick-select knob

The WAVE Siren Station offers:

1. Simplified installation and flexibility through modular design
2. Solar or AC power input
3. Optional strobe light to provide visual indication of conditions
4. External indicators of system status
5. Super-high sound pressure level – directional or omni-directional

WAVE Siren is exclusively distributed by:

WXLINE

Wxline, LLC • 3924 North Calle Casita • Tucson, AZ 85718

Call us today to discuss your specific application needs and to locate a representative in your area.

Toll Free: 1-800.615.0340

Int'l: ++ 520.615.9999 • Fax: 520.615.0030

www.wxline.com

Specifications are subject to change.

