

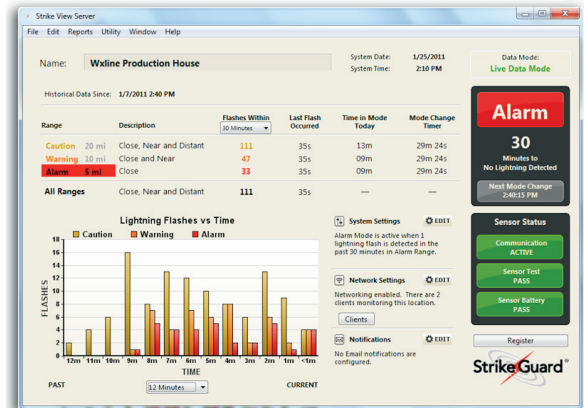
StrikeGuard®

STRIKE VIEW SOFTWARE

Strike View Server runs on a Windows® or Mac® computer connected to the Strike Guard Lightning Data Receiver to provide lightning data displays, e-mail notification, audible and visual lightning alarms, and lightning data logging.

Strike View helps the user to categorize lightning data, analyze storm progression, and estimate the time to resume operations. Strike View expands upon the information presented by the Lightning Data Receiver.

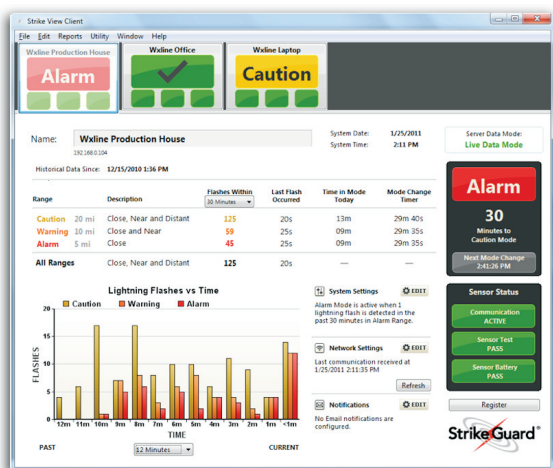
The network feature allows for multiple Strike View Servers to be viewed on a single Strike View Client display page.



Strike View Server during an active local thunderstorm.

STRIKE VIEW DELIVERS:

- Lightning counts in three range categories: Caution (<20 miles), Warning (<10 miles) and Alarm (<5 miles)
- User-defined e-mail notification for lightning and all-clear conditions
- User-set audible and visual alarms
- System state indicators, lightning data logging, and histogram
- Countdown to "No Lightning Detected"
- Lightning-proof fiber-optic link between Lightning Data Receiver and computer
- Strike View Server and Strike View Client applications operate across a local area network (LAN) for multiple access points



Strike View Client software shows three Strike Guard sensors across a LAN.

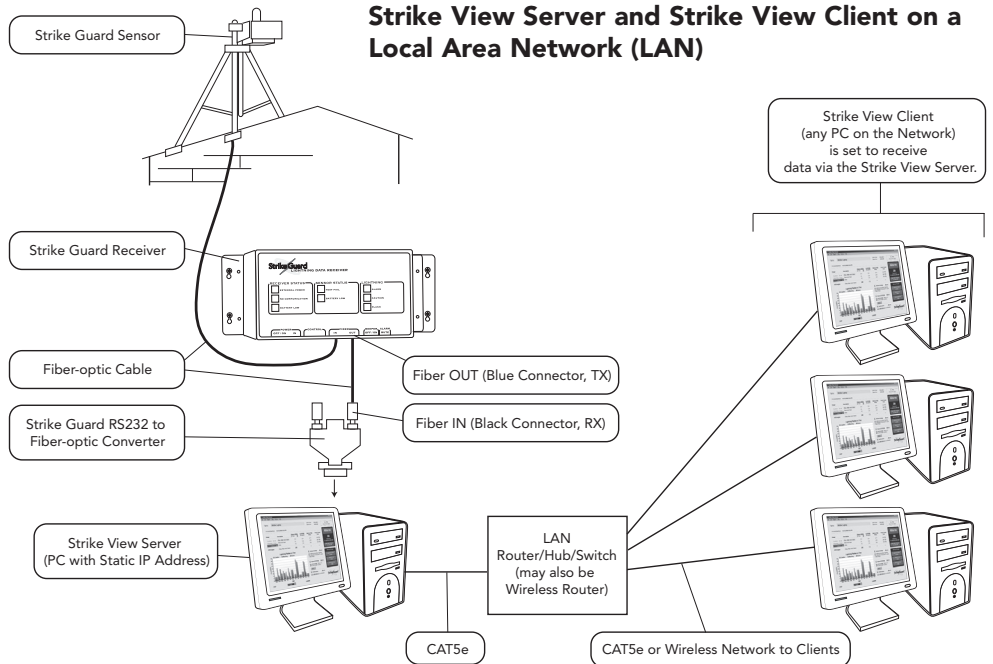


Strike View Client easily toggles between different Strike View Servers.

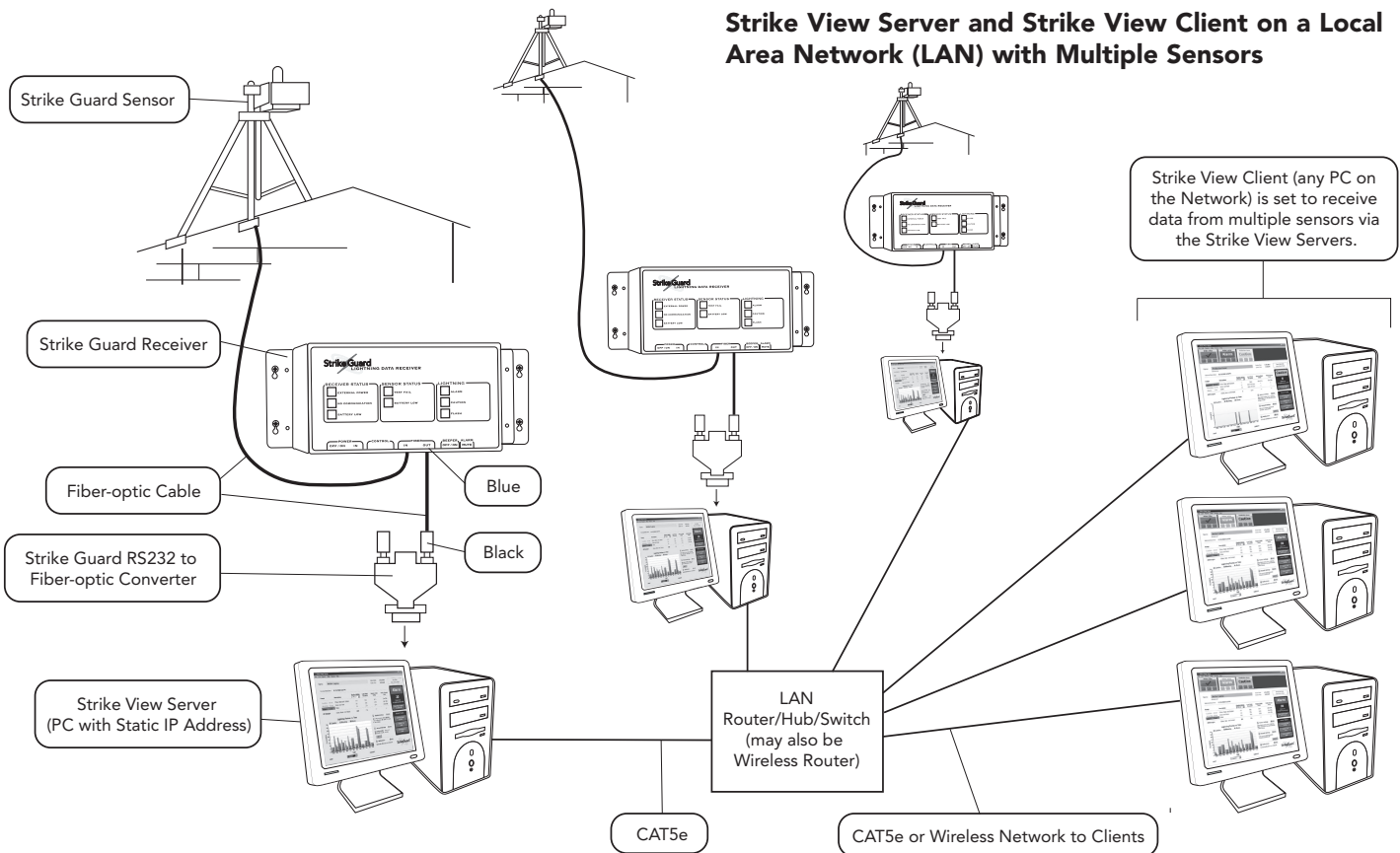
SOFTWARE SPECIFICATIONS:

COMPUTER REQUIREMENTS: 256MB; Pentium III or higher recommended
PLATFORM: Microsoft Windows® 2000/XP/Vista/Windows® 7 OR Macintosh OS X
INTERFACE: Strike Guard RS-232 to Fiber-optic Converter to PC's 9-pin serial port or USB Port with adapter
CABLE: Rugged, connector-less PCS PMMA fiber-optic cable
FORMAT: Installation CD, thumb drive, or online download

Strike View Server and Strike View Client on a Local Area Network (LAN)



Strike View Server and Strike View Client on a Local Area Network (LAN) with Multiple Sensors



Contact Wxline for a Strike View demonstration.



Wxline, LLC • 3924 North Calle Casita • Tucson, AZ 85718 • USA

Toll Free: 1-800.615.0340

Int'l: ++ 520.615.9999 • Fax: 520.615.0030

www.wxline.com

Specifications are subject to change.