

StrikeGuard®

Strike View Pro Software

Strike View Pro Server runs on a Windows® computer connected to the Strike Guard Lightning Data Receiver to display lightning data, issue e-mail notifications, relay audible and visual lightning alarms, and record lightning data.

Strike View helps the end-user to categorize lightning data, analyze storm progression, and estimate the time to resume operations. Strike View expands upon the information presented by the Lightning Data Receiver.

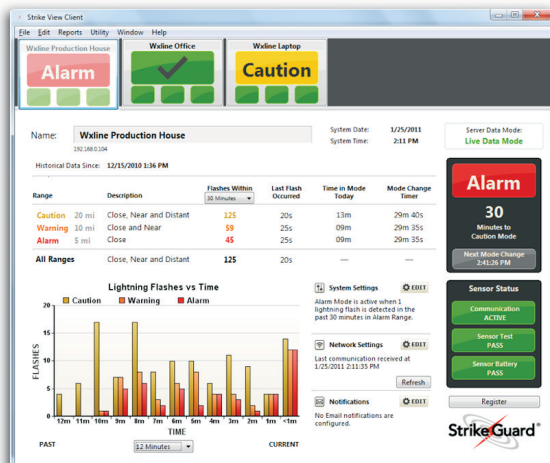
The network feature allows for multiple Strike View Servers to be viewed on a single Strike View Client display page.



Strike View Server during an active local thunderstorm.

STRIKE VIEW DELIVERS:

- Lightning counts in three range categories: Caution (<20 miles), Warning (<10 miles) and Alarm (<5 miles)
- User-defined e-mail notification for lightning and all-clear conditions
- User-set audible and visual alarms
- System state indicators, lightning data logging, and histogram
- Countdown to "No Lightning Detected"
- Lightning-proof fiber-optic link between Lightning Data Receiver and computer
- Strike View Server and Strike View Client applications operate across a local area network (LAN) for multiple access points
- Strike View Widget to display lightning status in real time on user controlled website.



Strike View Client software shows three Strike Guard sensors across a LAN.



Strike View Client easily toggles between different Strike View Servers.



CURRENT LIGHTNING STATUS AT WXLINE FACILITIES



Real Time Local Lightning Detection

423 SOUTH OLSEN AVENUE

3924 NORTH CALLE CASITA



Strike View Pro Server from two sites displayed on public facing website. <https://www.wxline.com/widget-demo>

Strike View Pro Server provides advanced programming tools which enable users to provide real time lightning status information to internet connected devices.

A built-in SFTP server allows Strike View Pro to upload the current status of the system into a web directory which can be viewed on any browser with access to the internet.

Unlike restrictive apps that are not compatible with some devices, Strike View Pro allows remote viewing of the on-sight lightning conditions from anywhere in the world regardless of platform.

Strike View Pro can also send digital push notifications using a built-in TCP/IP output and email server. Notification messages can be customized to relay various lightning condition changes and system alerts.

SOFTWARE SPECIFICATIONS:

COMPUTER REQUIREMENTS: 256MB; Pentium III or higher recommended

PLATFORM: Windows® 10 or Newer

INTERFACE: Strike Guard RS-232 to Fiber-optic Converter to PC's 9-pin serial port or USB Port with adapter

CABLE: Rugged, connector-less PCS PMMA fiber-optic cable

FORMAT: Installation CD, thumb drive, or online download

Contact Wxline for a Strike View Pro demonstration.



Wxline, LLC • 3924 North Calle Casita • Tucson, AZ 85718 • USA Toll Free: 1-800.615.0340

Int'l: ++ 520.615.9999 • Fax: 520.615.0030